

PARKINSON & PARKINSON PTY. LTD.
 CONSULTING SURVEYORS
 185 HERRIES STREET, TOOWOOMBA.
 A.C.N. 010 657 155
 Telephone: 0746 323244 Facsimile: 0746 393257

Date: 4/07/12
 Scale: 1:1500
 Registered Proprietor: _____
 Description: Proposed Reconfiguration of Lot 13 on SP147589

Original Parish: **DRA YTON**
 County: **AUBIGNY**
 Local Authority: TOOWOOMBA REGIONAL

STAGES:-

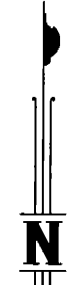
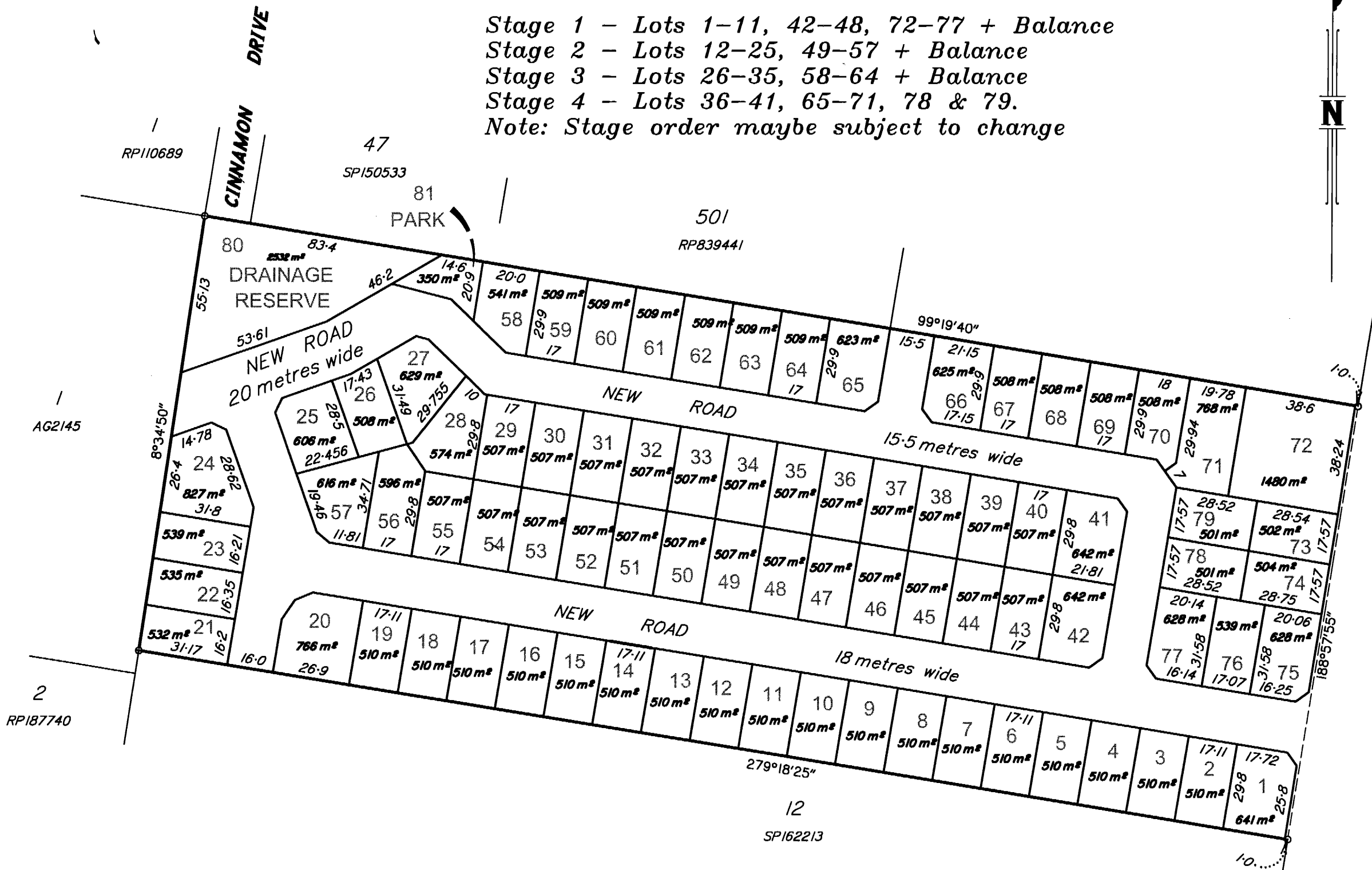
Stage 1 - Lots 1-11, 42-48, 72-77 + Balance

Stage 2 - Lots 12-25, 49-57 + Balance

Stage 3 - Lots 26-35, 58-64 + Balance

Stage 4 - Lots 36-41, 65-71, 78 & 79.

Note: Stage order maybe subject to change



1. This plan was prepared for the purpose and exclusive use of Rowen Meyer & Associates to accompany an application to the Toowoomba Regional Council for approval to reconfigure the land described in the plan and is not to be used for any other purpose or by any other person or corporation. Parkinson & Parkinson Pty. Ltd. accepts no responsibility for any loss or damage suffered however arising to any person or corporation who may use or rely on this plan in contravention of the terms of this clause or clauses 2 or 3 hereof.
2. The dimension, area, size of lots shown on this plan are approximate only and may vary.
3. This plan may not be reproduced unless this note is included.

Scale 1:1500 - Lengths are in Metres.

